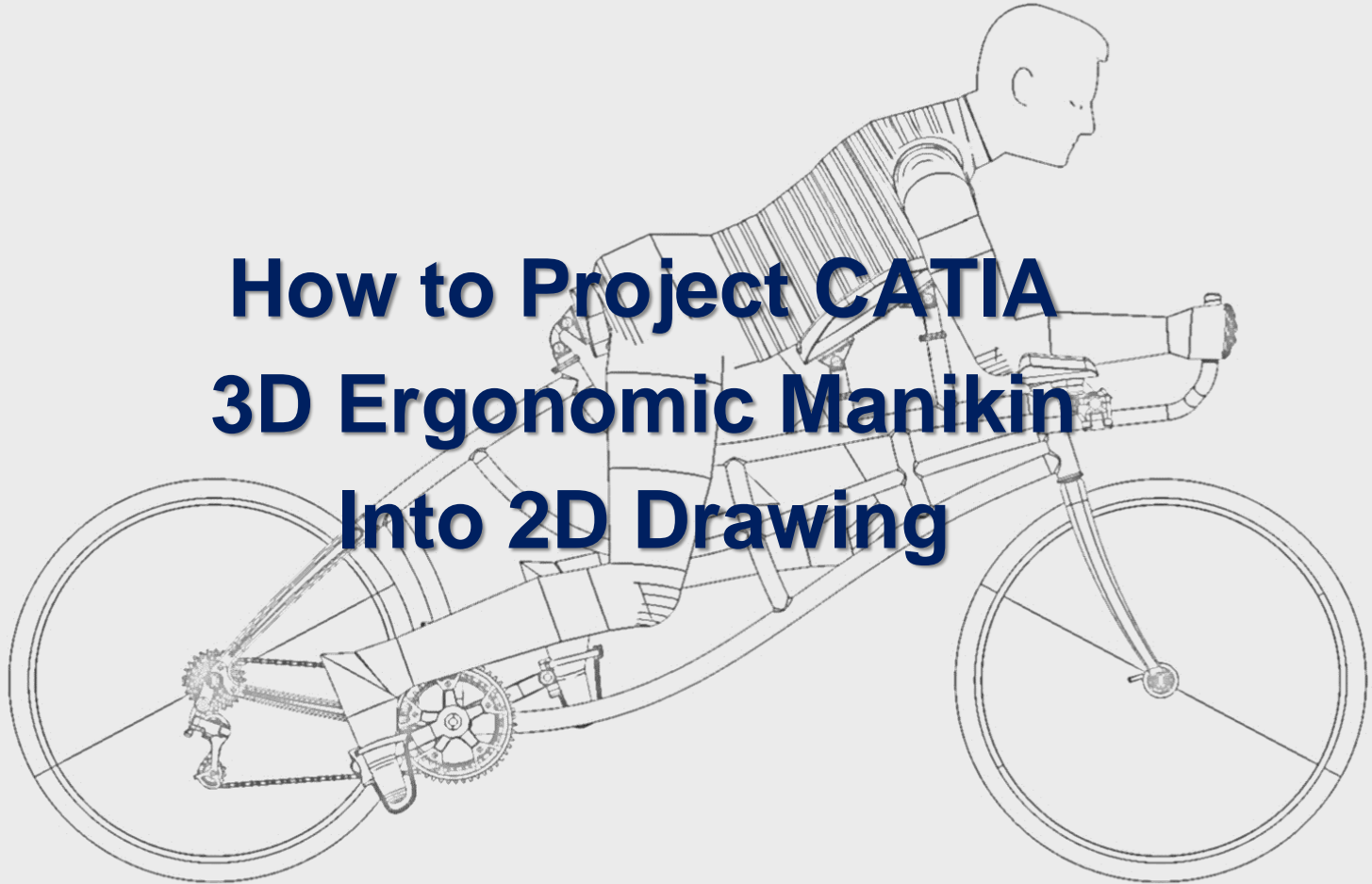
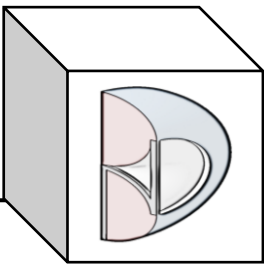


BND TechSource



How to Project CATIA 3D Ergonomic Manikin Into 2D Drawing





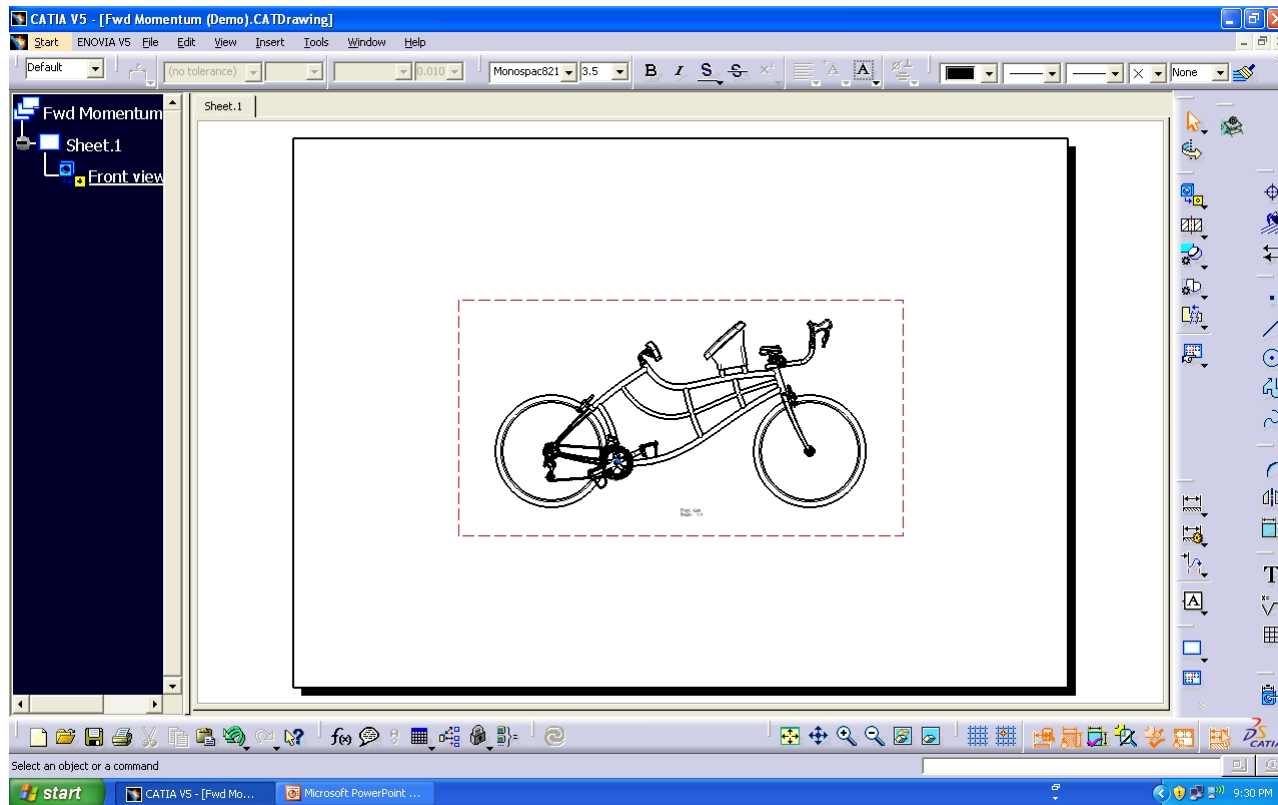
- The following licenses are required to project 3D Ergonomic Manikins into CATIA 2D drawings:
 - Digital Mockup Optimizer
 - Ergonomics Design & Analysis
 - Mechanical Design Drafting



BND TechSource

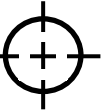


- Step 1: Project the 3D geometry normally into a 2D drawing.

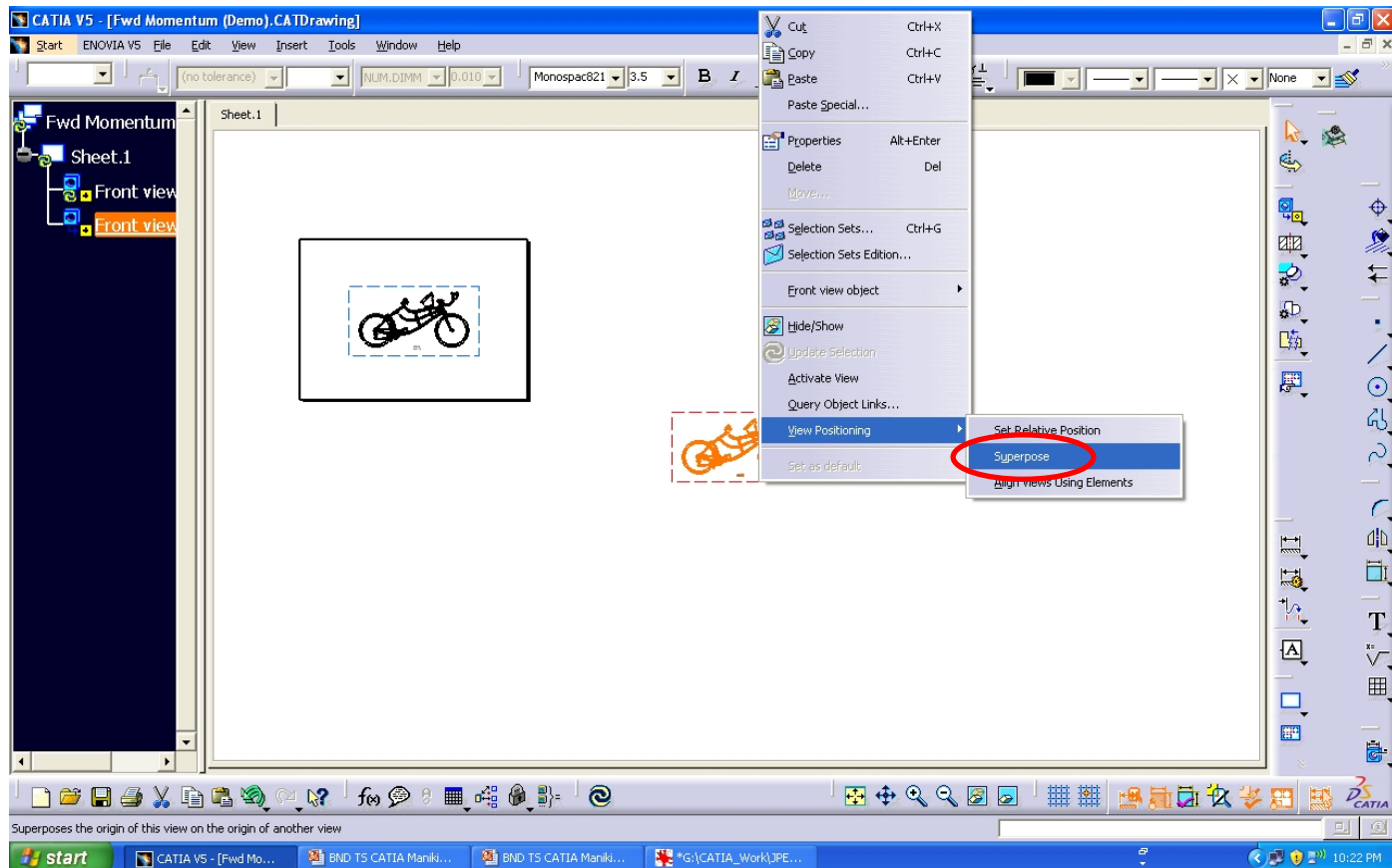


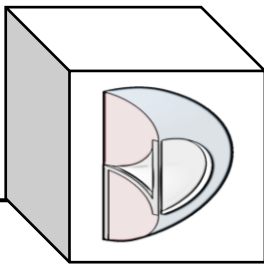


BND TechSource



- Step 2: Create an additional (duplicate) view and Superimpose it on the first view.

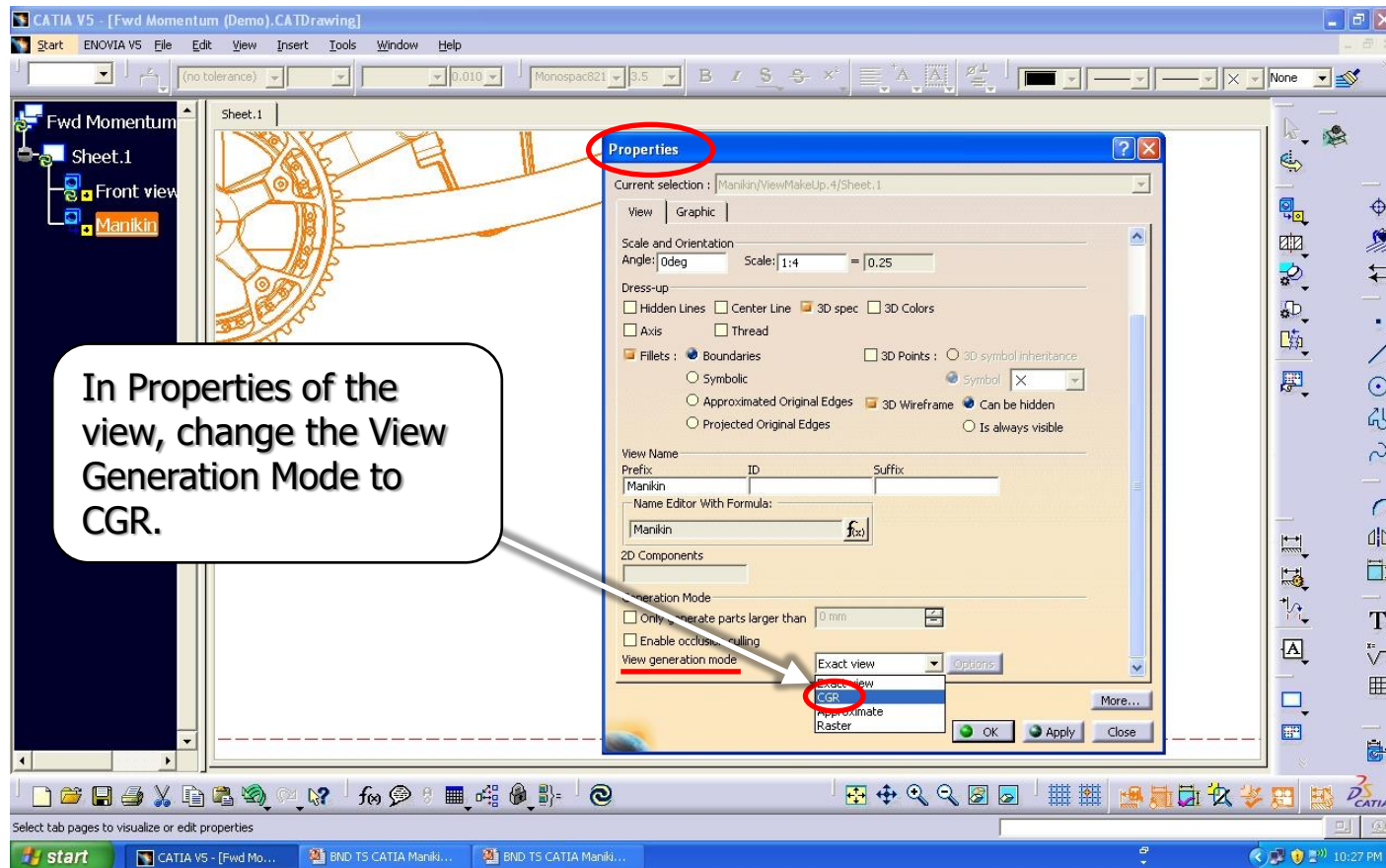


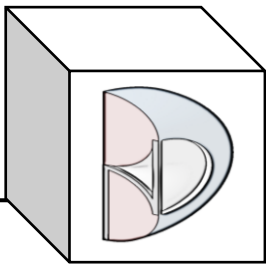


BND TechSource



- Next, Rename the new view and change the View Generation Mode to CGR.



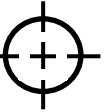
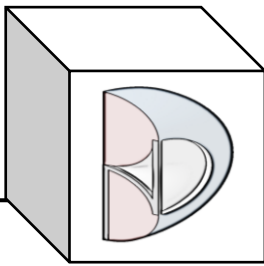


BND TechSource

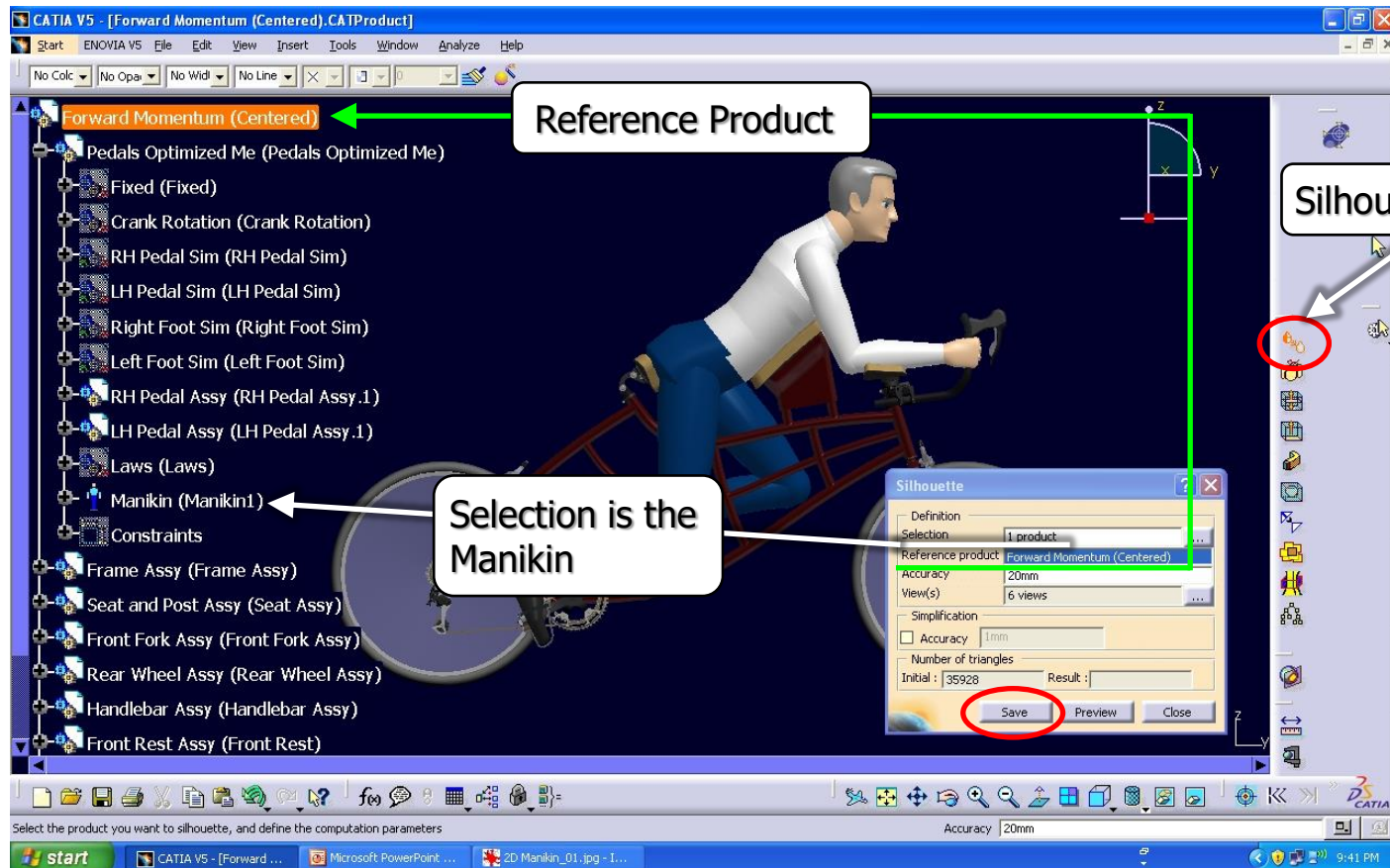


- Step 3: Position the Manikin in 3D space as you would like it to project into 2D.





- Step 4: Use DMU Optimizer to create a Silhouette of the Manikin.

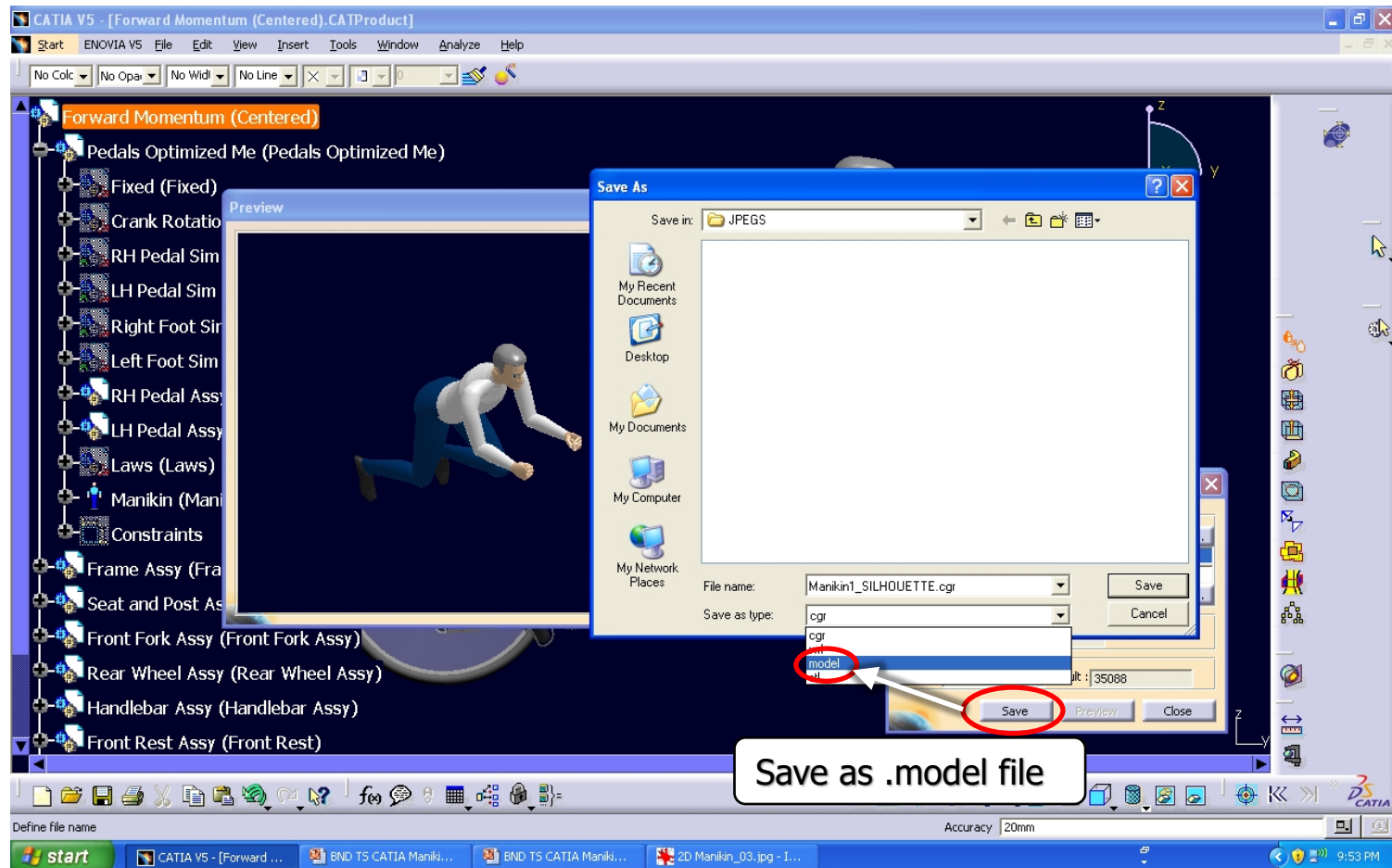




BND TechSource



- Step 5: Save the Silhouette as a .model file.

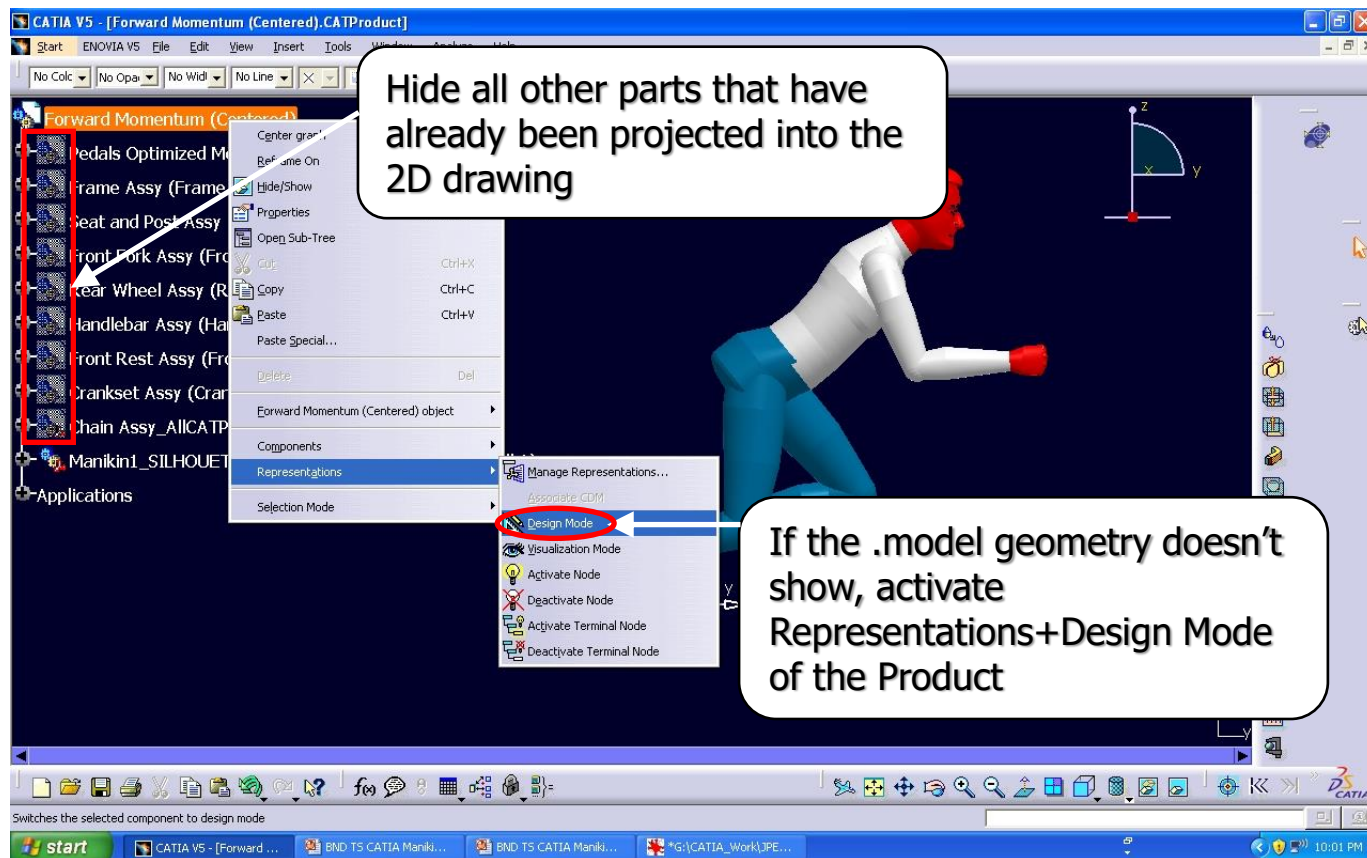


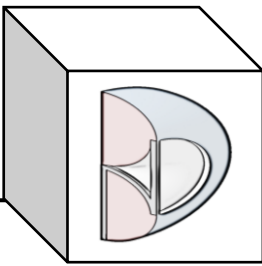


BND TechSource



- Step 6: Add the .model into the Product used for the 2d drawing.

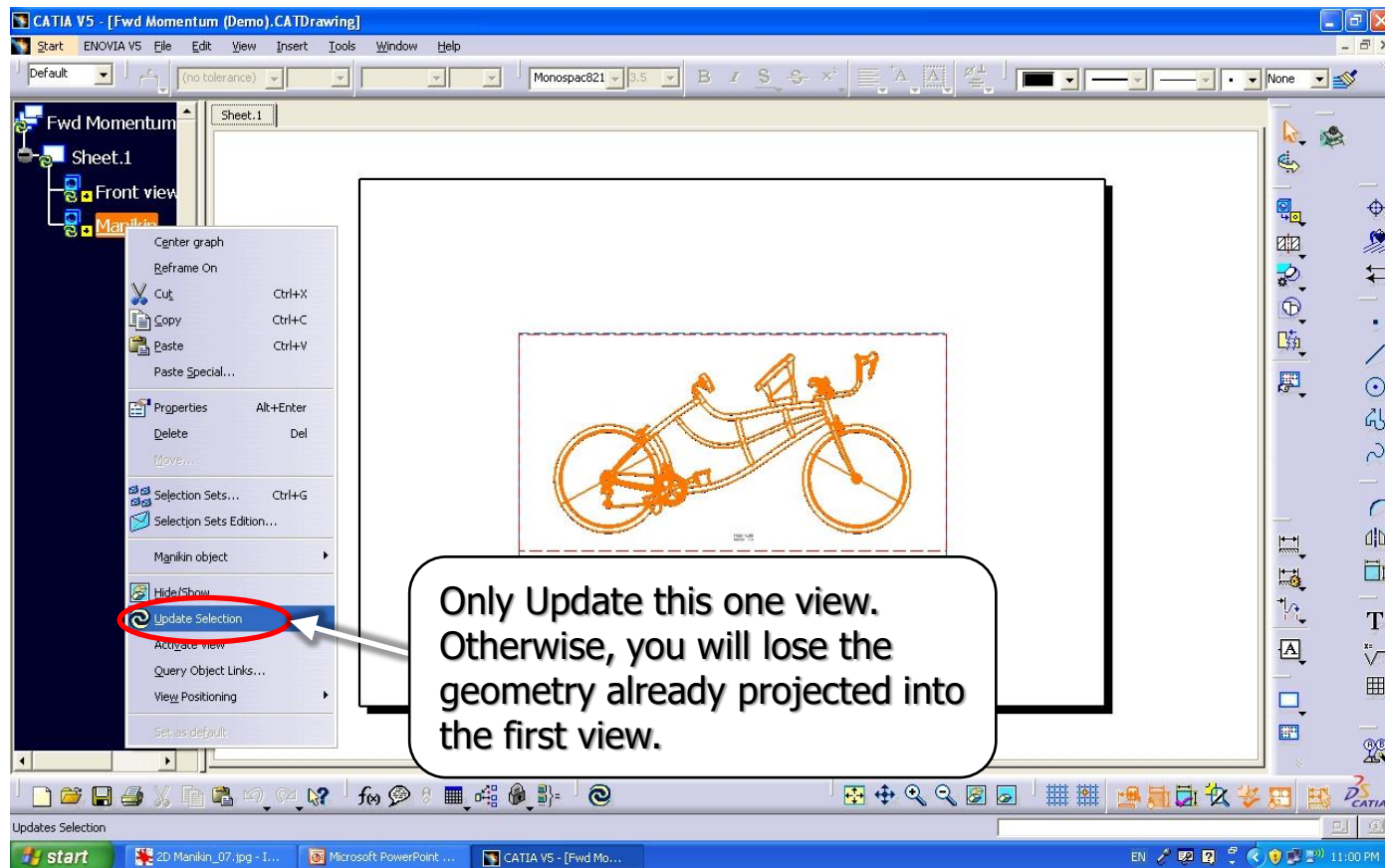




BND TechSource



- Step 7: Update the Manikin view in the 2d drawing.

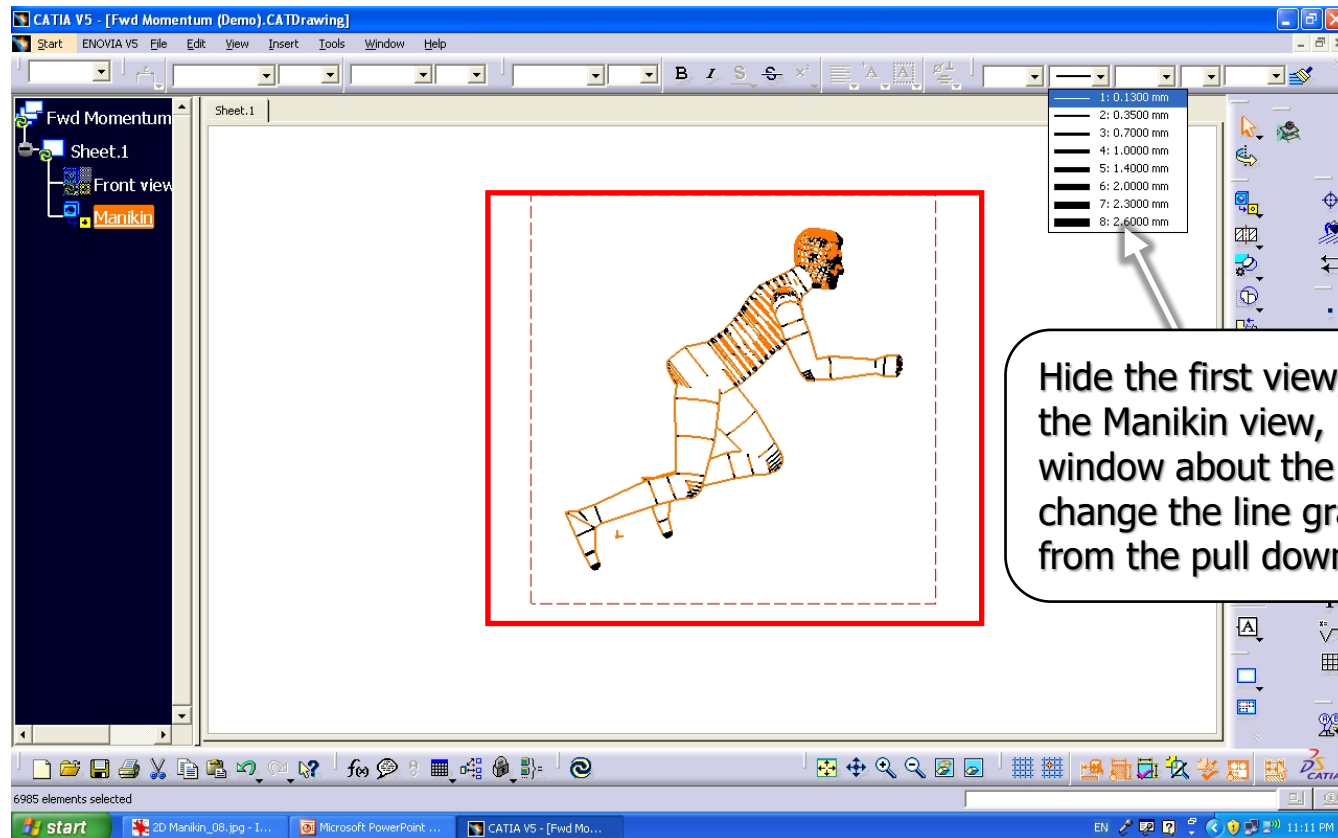




BND TechSource



- Step 8: You may have to Superimpose the views again. Also, you may want to change the line graphics of the Manikin (CGR) view.

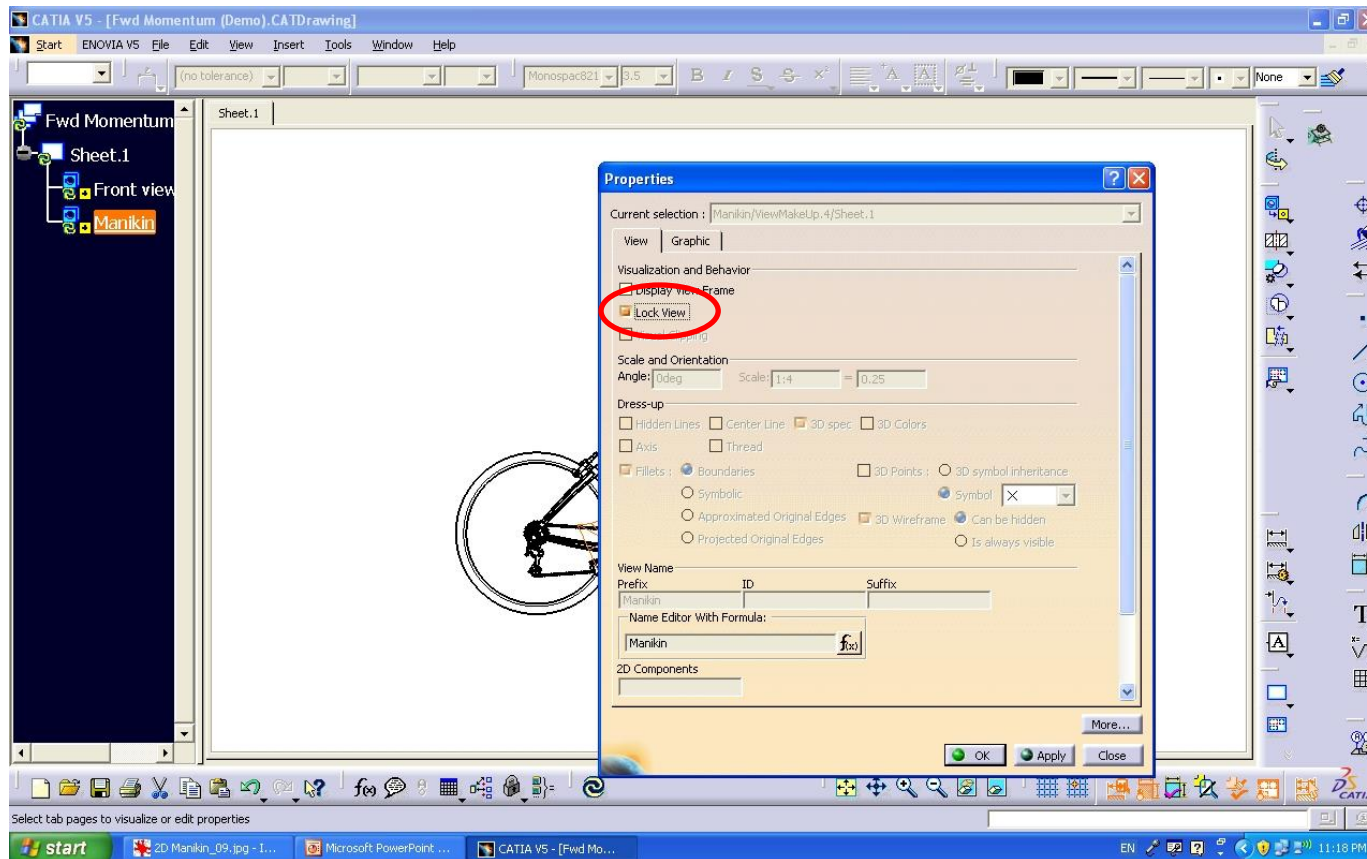


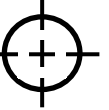
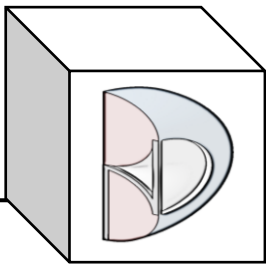


BND TechSource



- Step 9: Show the first view and Lock the Manikin view.





- Conclusion:

This is an example of how to Project CATIA 3D Ergonomic Manikin Into 2D Drawing.

We hope this will help those who need this type of simulation.

As always, we are open to any discussions this may bring.

Please ***subscribe*** to our YouTube channel!

